

920F / 920SPF / LD220F / LD220SPF
Aficio™ MP 201F / 201SPF

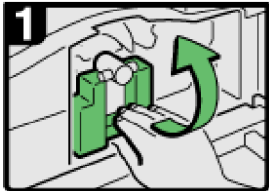
[Home](#) [Manuals](#) | [Contents](#) | [Previous](#) • [Next](#) |



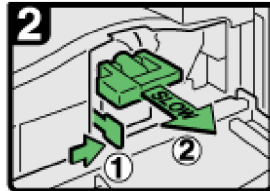
[Top Page](#) > [About This Machine](#) > [Adding Toner](#) > [Adding Toner](#) > Replacing Toner

Replacing Toner

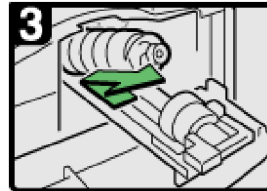
This section describes how to replace the toner cartridge.



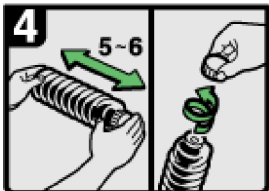
- Open the front cover of the machine.
- Raise the toner holder lever.



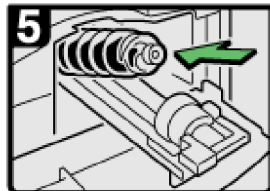
- Push the lever, and then gently pull out the holder.



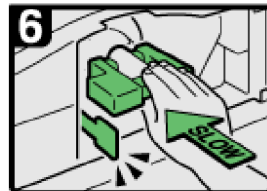
- Push the toner bottle back to raise its top, and then gently pull out the bottle.



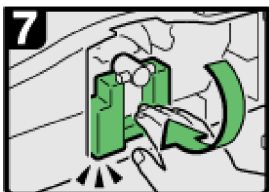
- Hold the new bottle horizontally and shake it from side to side five or six times.
- Remove the cap.



- Put the toner bottle on the holder, and then pull its top forward.



- Push in the lever until it clicks.



- Lower the toner holder lever back into its original position.
- Close the machine's front cover.

BRM0303

↓ Note

- Do not remove the cap before shaking.
- Do not remove the inner cap.

[Top](#) | [Previous](#) • [Next](#) |

Copyright (C) 2010